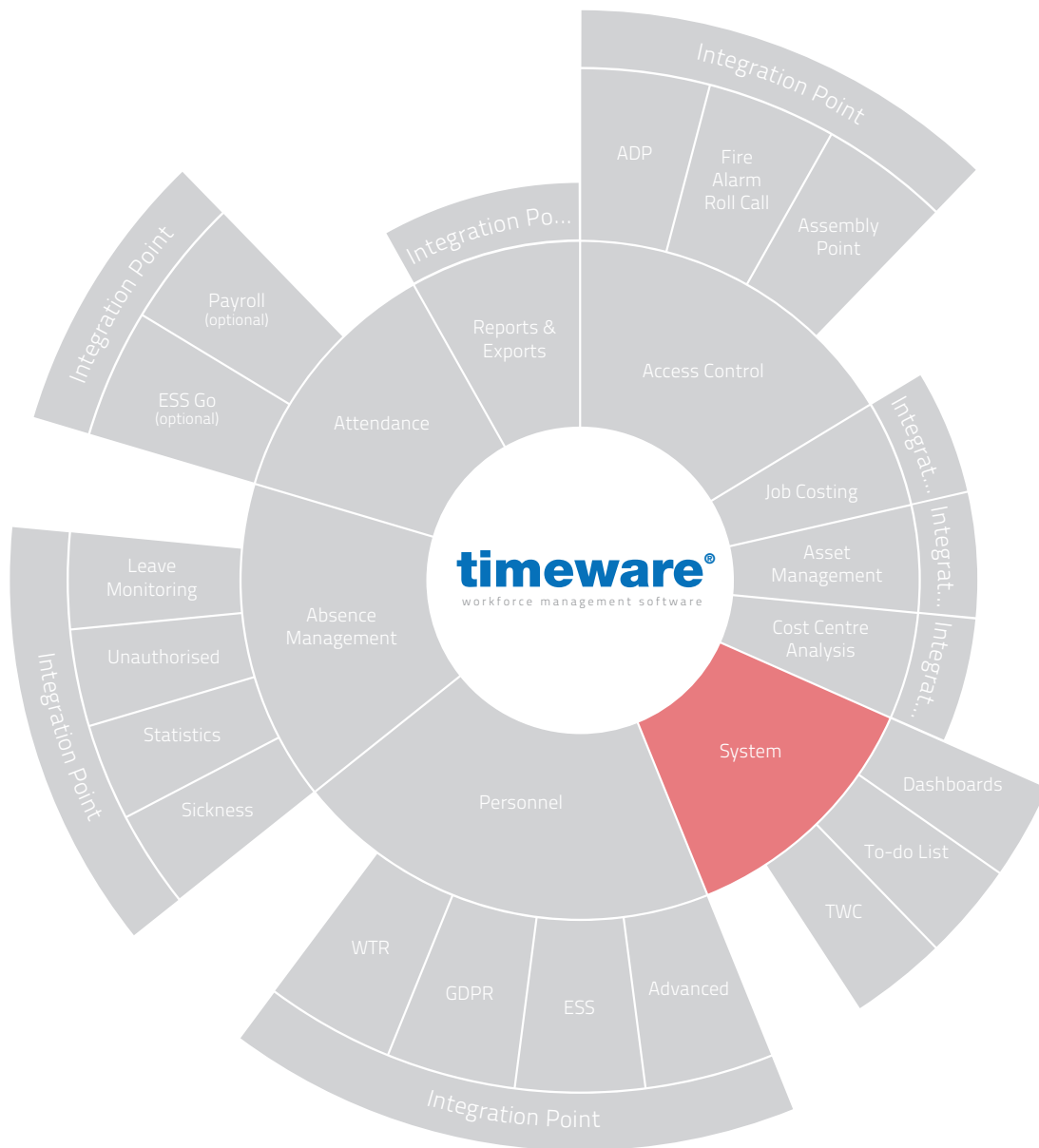




timeware[®]
workforce management software

timeware[®] Professional software installation



For more information about timeware[®] products, version updates, datasheets and reports, please refer to the timeware[®] community website:

www.timeware.org

We acknowledge the intellectual property rights of third parties, trade marks and brand names used within this document.

NMD³ Ltd

www.timeware.org
+44 (0)1706 659368

Contents:

Page

- 6.** Installing timeware[®] Professional on a Server

- 13.** Installing timeware[®] Services

DISCLAIMER

All the specifications made within this document are guides to follow, and may vary on a customer to customer basis. For further assistance, please contact timeware[®] support on 01706 658 222.

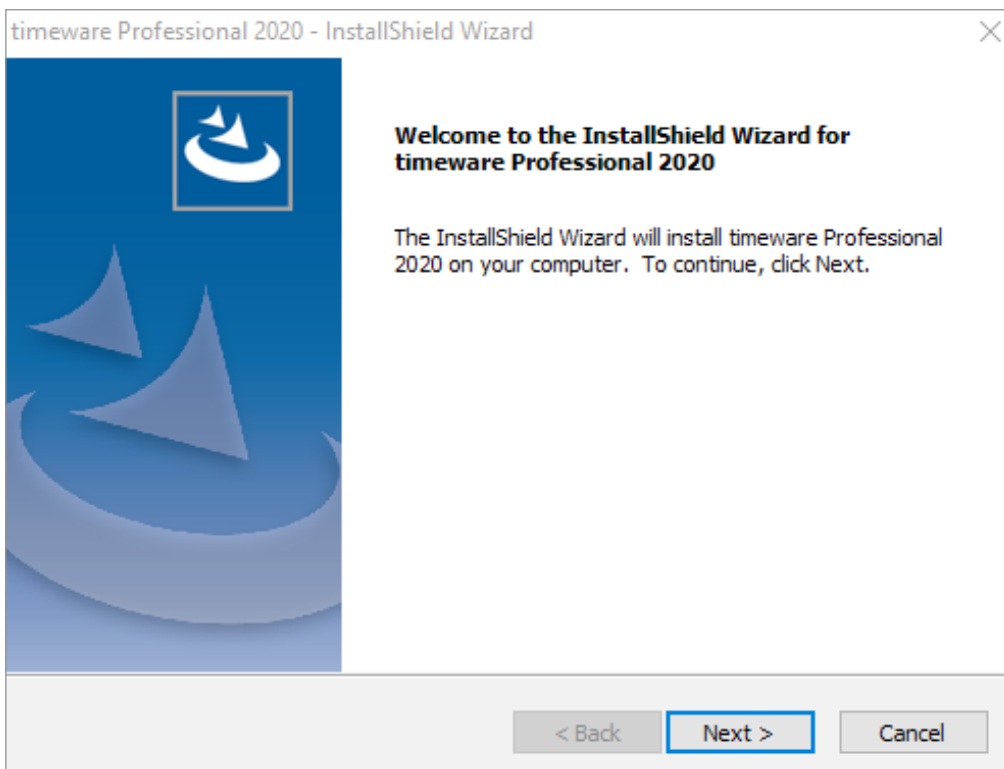
Installing timeware® Professional on a Server

To install timeware® you will first need to download the latest version of timeware® professional from <https://www.timeware.info/timeware-downloads>

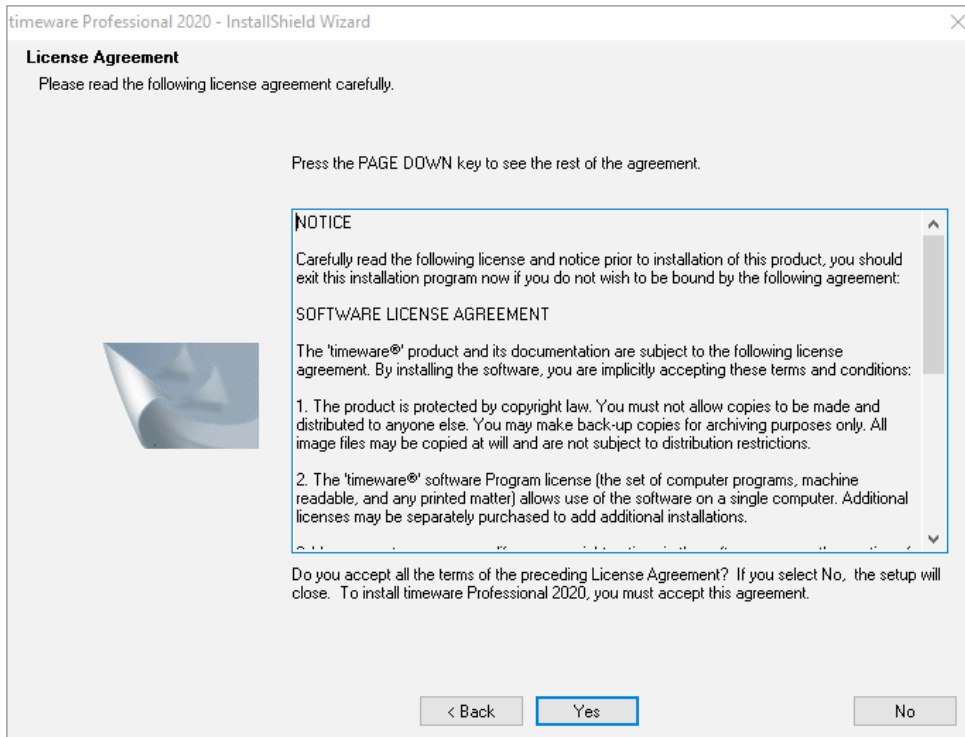
| | | | |
|----------------------------|---|------------------------------------|---|
| timeware Professional 2020 | The current version of timeware Professional 2020 | View release notes | Download Released: 29/04/2020 Version: 20.1.5 |
|----------------------------|---|------------------------------------|---|

Once the timeware® installer has finished downloading, you will then need to run the installer as administrator. (Note: It is important to run the installer as administrator to avoid errors occurring with the install)

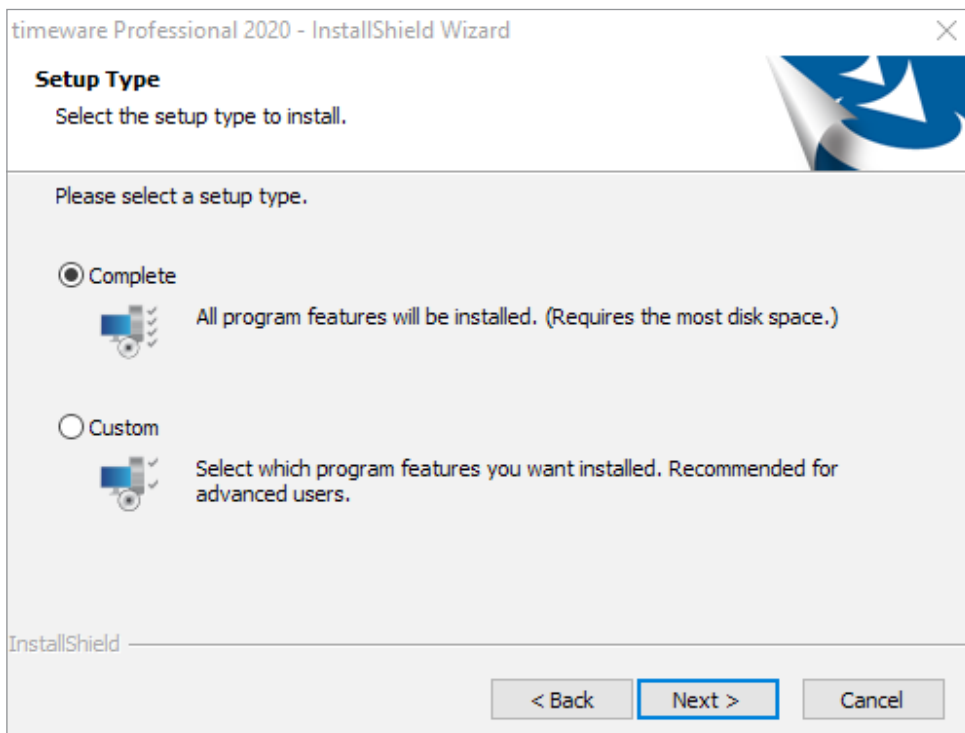
Once the installer opens, you will be greeted with a wizard page where you will need to select "Next"



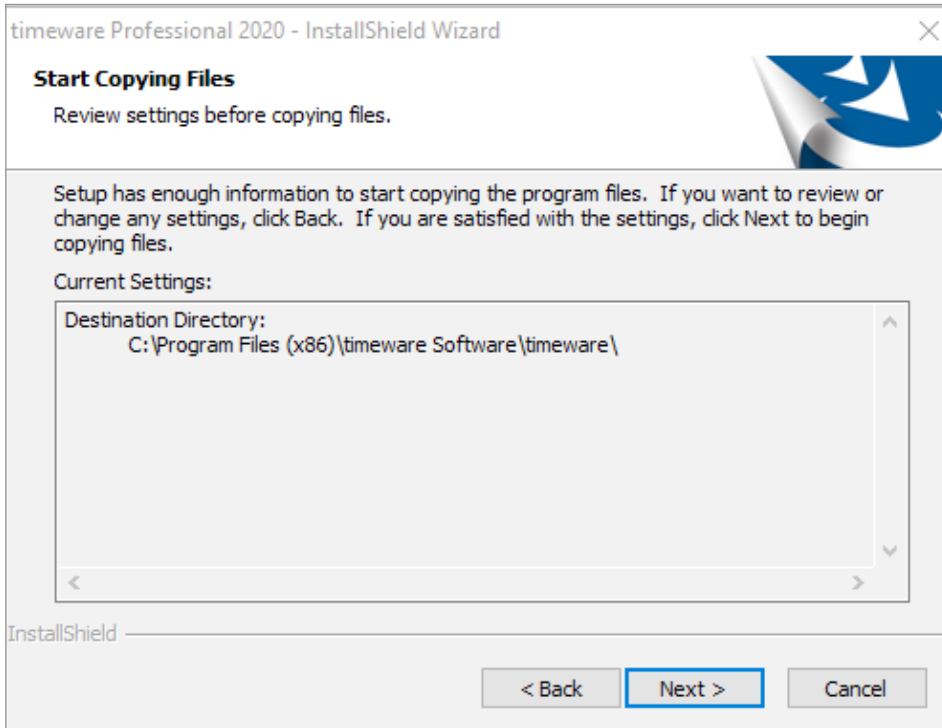
Next is the user agreement, which you will need to read through before selecting "Yes"



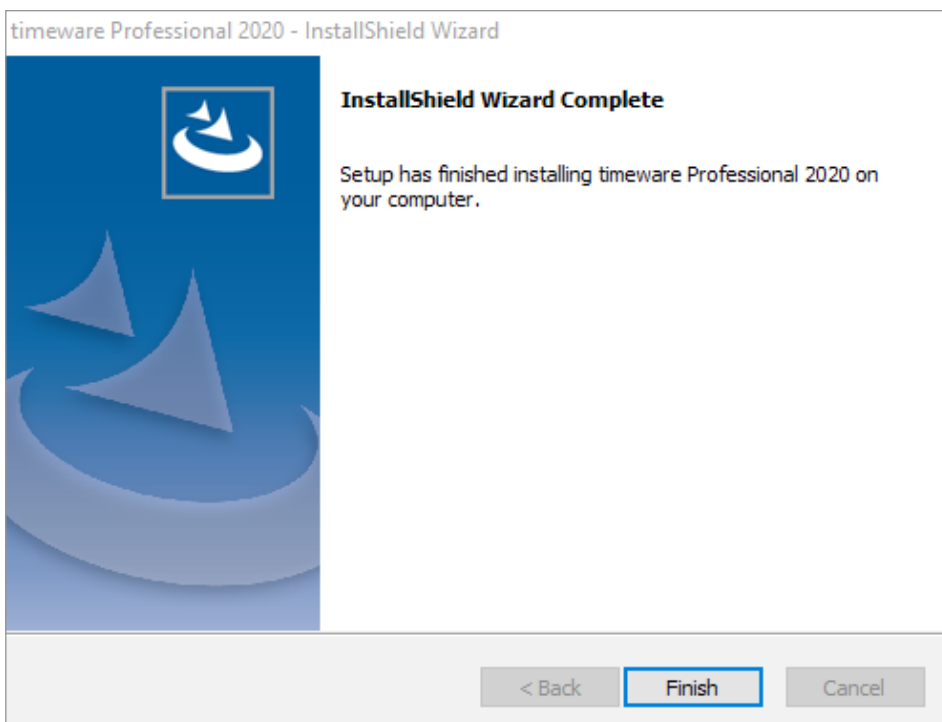
Then there will be a setup type that you will need to select, for installing on a server you will need to select the "Complete Option" before selecting "Next"



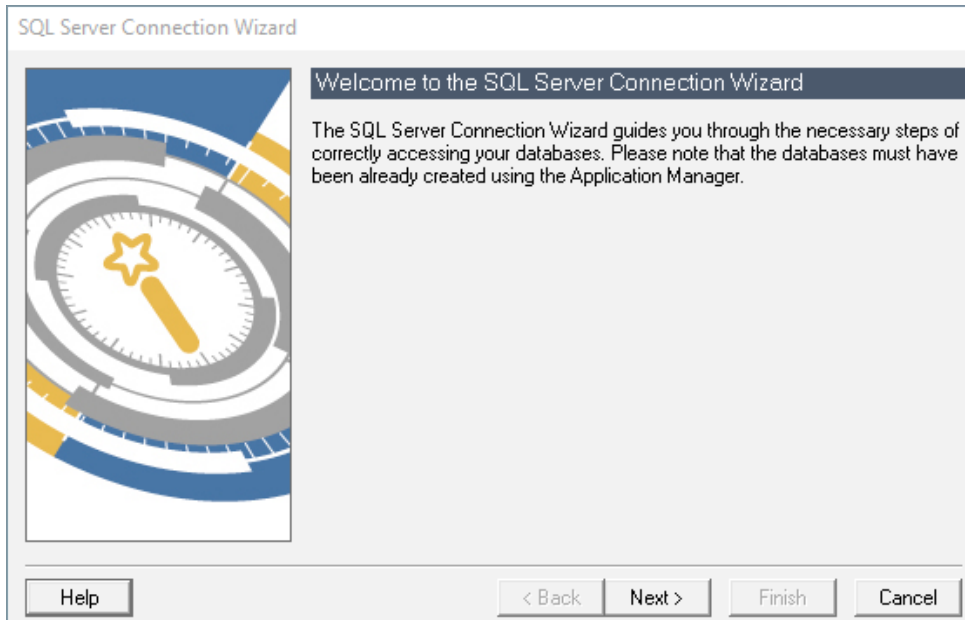
After selecting the type of setup, you will then need to confirm by clicking "Next" and timeware® will begin installing onto your computer.



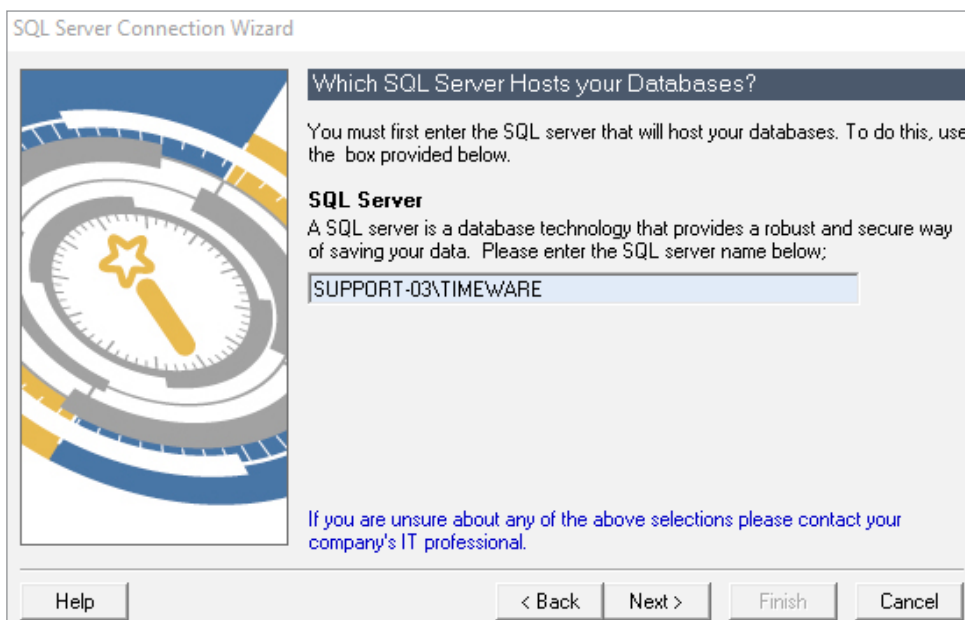
Once the install has complete, the wizard will ask you to select finish which will then close the wizard down.



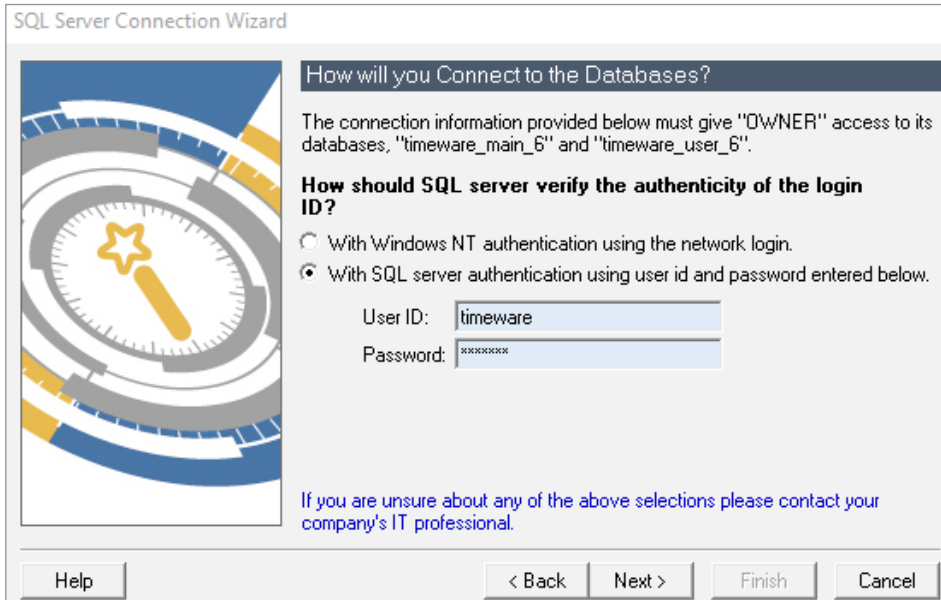
Now that timeware[®] has installed you will now need to open the application, so we can connect the software to the SQL database. Once you have opened the software, you will be greeted with the "SQL Wizard"



After selecting "Next" you will be required to type in the SQL server name, followed by the instance name (Note: This is what is used within SSMS to login to SQL)



After entering the SQL server name and selecting "Next" you will then need to enter the user ID "timeware" followed by the password you created for the SQL timeware® login before then selecting "Next"



SQL Server Connection Wizard

How will you Connect to the Databases?

The connection information provided below must give "OWNER" access to its databases. "timeware_main_6" and "timeware_user_6".

How should SQL server verify the authenticity of the login ID?

With Windows NT authentication using the network login.

With SQL server authentication using user id and password entered below.

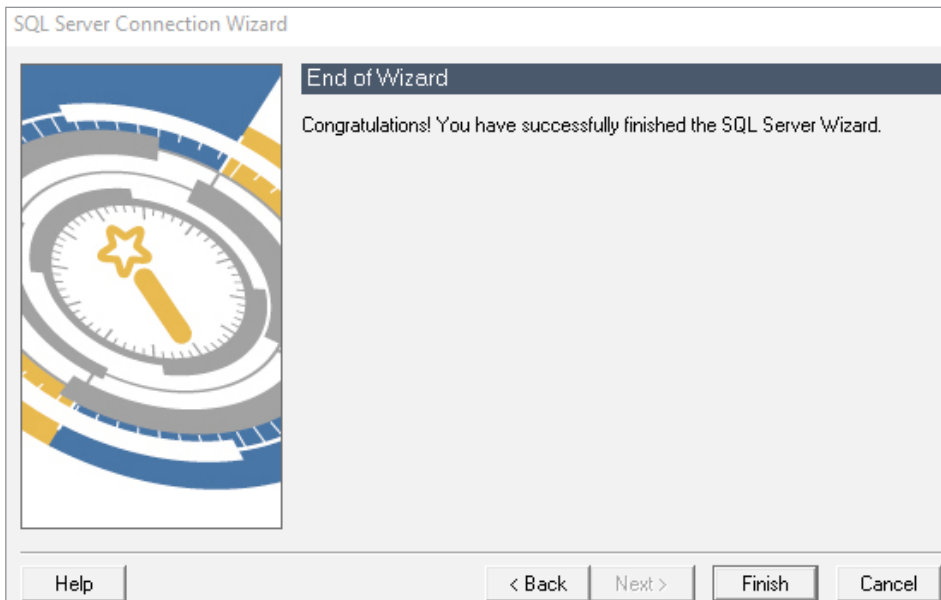
User ID:

Password:

If you are unsure about any of the above selections please contact your company's IT professional.

Help < Back Next > Finish Cancel

If all details have been entered correctly, you will now see a message informing you that you have successfully finished the SQL Server Wizard.



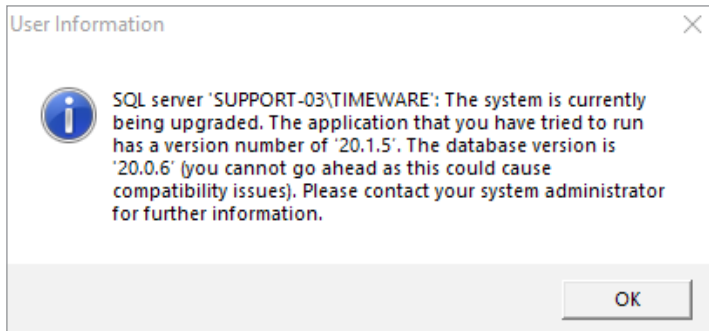
SQL Server Connection Wizard

End of Wizard

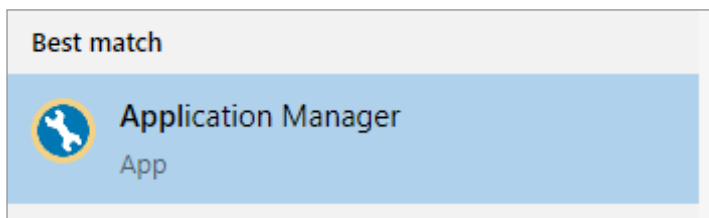
Congratulations! You have successfully finished the SQL Server Wizard.

Help < Back Next > Finish Cancel

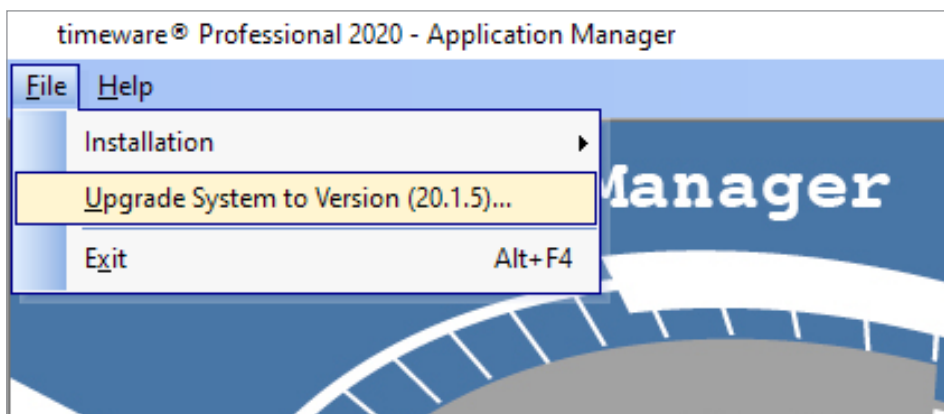
Once you have successfully connected timeware® Professional to SQL, you may receive a message asking you to upgrade the database version of timeware.



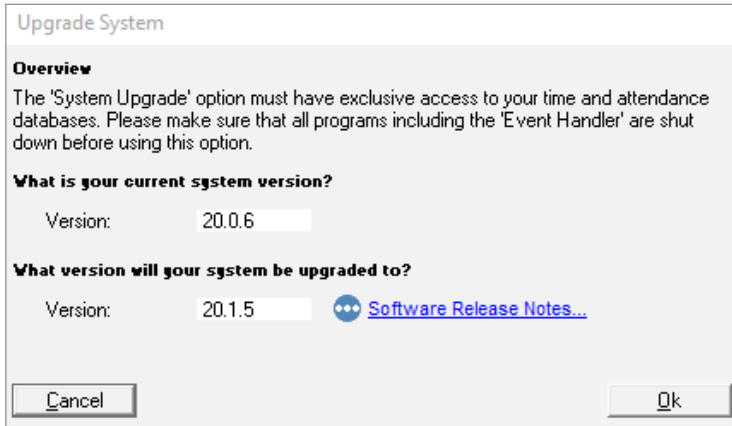
If so, you will need to search "Application Manager" on your computer and run the application.



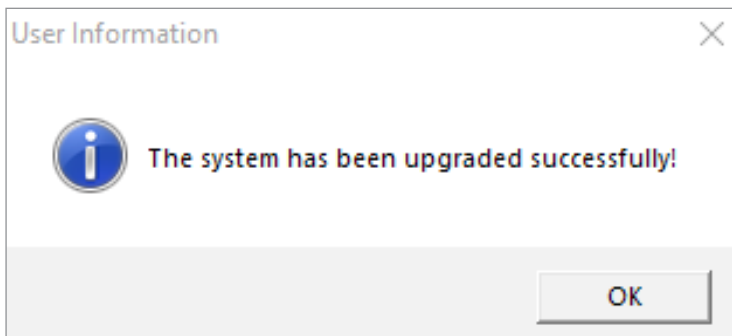
Once you have opened the "Application Manager" you will need to select "File" in the top left corner of the application, before then selecting "Upgrade System to Version (...)" (Note: The Application Manager will detect what version of software you require to upgrade to so the version number will differentiate)



Next you will see the system "Overview" windows that will inform you the databases current version, followed by what the system will be upgraded to. Once you are ready to continue with the upgrade you will then need to select "OK" and the Application Manager will upgrade the database.




After the database has upgraded, you will receive a message confirming that the upgrade to the database was successful. Then you will be able to close the Application manager and timeware® Professional will have been installed successfully.



Installing timeware[®] Services

The final part of installing timeware[®] Professional on a server, is that the services will now need to be installed and setup correctly.







You will first need to go to the "File Location" of timeware[®] which as standard is located in C:\Program Files (x86)\timeware[®] Software\timeware[®] Once you have opened the file location of timeware, you will then need to locate a windows batch file named "Services" and "Run as Administrator"

| | | | |
|---|------------------|--------------------|------|
|  Services.bat | 05/02/2020 12:38 | Windows Batch File | 5 KB |
|---|------------------|--------------------|------|

Next you will be asked if you would like to "Install" or "Uninstall" timeware[®] services, so you will need to type "I" and then press enter. This would have now installed timeware[®] "NMD3" services onto the server. If you have connected timeware[®] Professional to your SQL server, you can then select "Y" to then start the services.

```
C:\WINDOWS\System32\cmd.exe
Do you want to install or uninstall the services (I/U)
```

Then you will need to go into the services window on your PC, and on each "NMD3" service you will need to right click and select "Properties" From there you will then need to select the "Startup Type" as "Automatic (Delayed Start)" before then selecting "OK" Once you have completed this on each "NMD3" service you have completed setting up the timeware[®] services.

| | | | |
|--|-----------------|----------------|----------------|
|  NMD3 Calculation Agent | Calculates d... | Automatic (... | Local Syste... |
|  NMD3 Data Collection Agent | Handles dat... | Automatic (... | Local Syste... |
|  NMD3 Email Agent | Handles aut... | Automatic (... | Local Syste... |
|  NMD3 Event Handler | Handles sch... | Automatic (... | Local Syste... |
|  NMD3 Fire Roll Call | Handles the... | Automatic (... | Local Syste... |
|  NMD3 Terminal Enquiry Ag... | Creates the ... | Automatic (... | Local Syste... |