



HR, Time and Attendance Software

Fire alarm monitor installation notes

Overview

The timeware® fire roll call sends a roll call report to pre-defined printers and/or email addresses within the company when a signal is received from the customer's fire alarm system.

The fire alarm monitor is connected to the customers fire alarm panel using a 2-core cable. The cable is connected to a pair of normally open contacts that close on activation of the alarm. The contacts need to be voltage free. The cable will be installed by the customer's fire alarm maintenance company. Under no circumstances do not open the customer's fire alarm panel.

The fire alarm monitor must also be connected to a 240v supply and connected to the customer's computer network using a RJ45 patch cable

Parts Needed

Equipment required..... Ref. No.



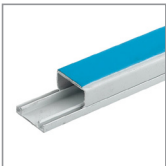
5mm drill bit..... 21971



4 x Screws..... 8042p



4 x Raw plugs..... 22982



Self adhesive trunking..... 64026



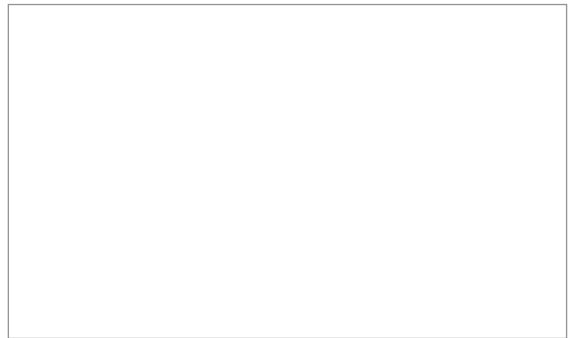
RJ45 patch lead..... 53230

- 3-core flex cable is required in your tool-kit.
- Hammer is also required for your tool-kit, as the raw plug will be tight to just simply push in.

Installation instructions

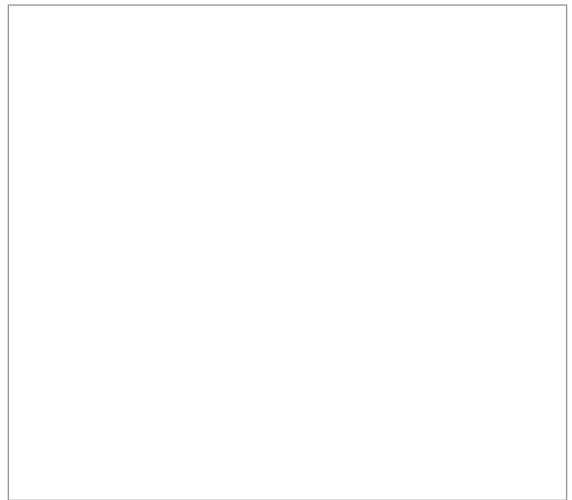
Step 1

- Fit cable tie restraints or cable tie clips to the back panel of the fire alarm monitor
- Attach an appropriate length of mains cable to the power supply of the fire alarm monitor.
- Using the supplied cable ties, secure the cable to the cable restraints



Step 2

- Find an appropriate position close to the customers fire alarm panel. Taking into consideration of any hidden existing cables or pipework.
- Taking into consideration the run of cables and trunking required.
- Position the panel on the wall and mark the position of one of the top mounting holes.
- Drill a 5mm hole for wall plug.
- Insert raw plug and screw into the hole. Leaving 10mm of the screw showing
- Using the screw hang the panel on the wall and making sure the panel is straight mark the other 3 mounting holes.
- Drill and Raw plug the remaining 3 holes
- Insert a screw into the other top mounting hole. Leaving 10mm of the screw showing
- Hang the panel on the wall
- Insert the bottom 2 mounting screws and tighten all 4 screws
- Make sure the panel is secure



Step 3

- Connect and secure the RJ45 Patch lead
- Connect and secure the fire alarm contact cable on to the fire alarm monitor.
- IP information will need to be configured as it is not a DHCP unit.

