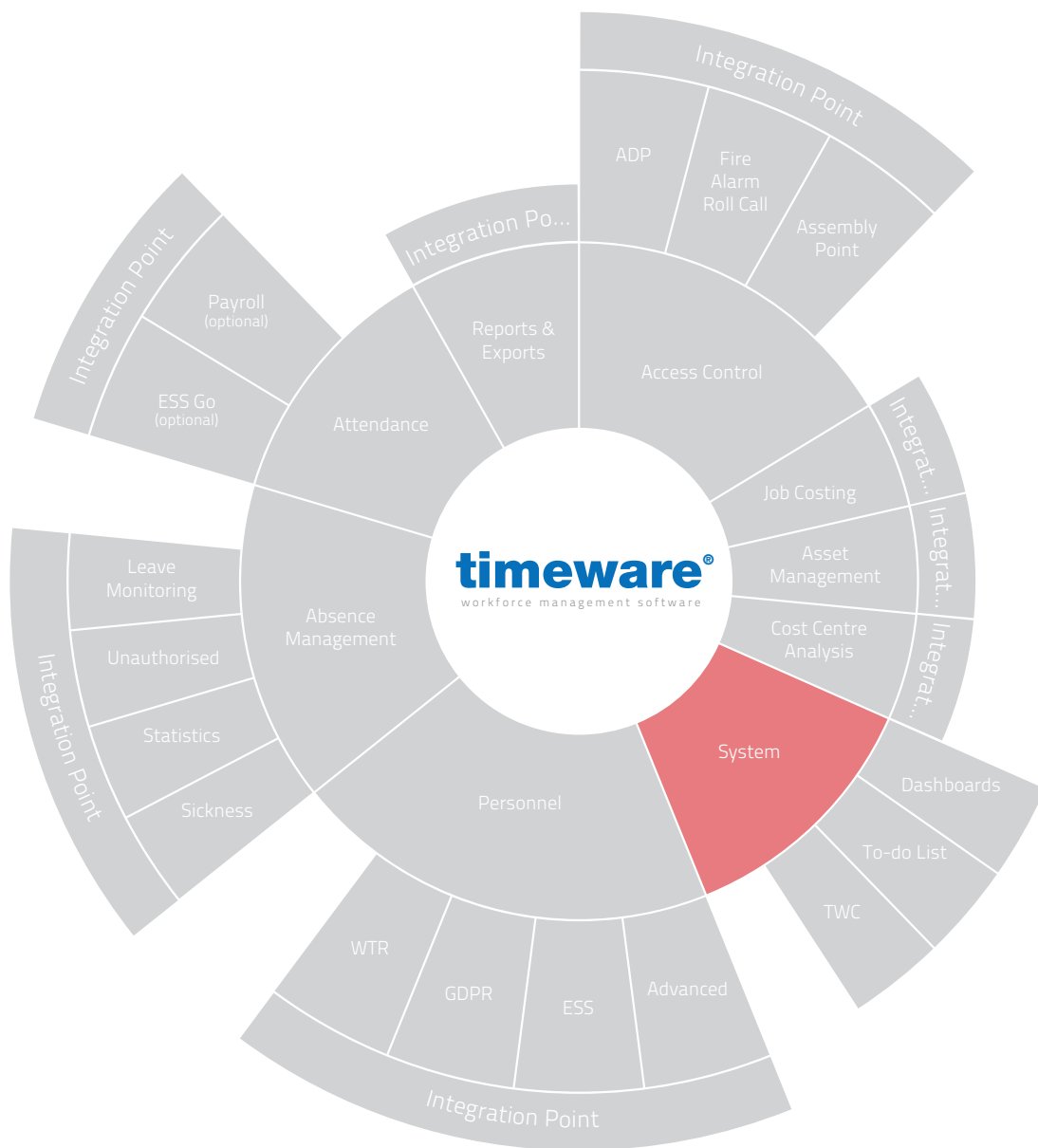


timeware[®]

workforce management software

timeware[®] Professional IIS, ESS & TWC setup information



For more information about timeware[®] products, version updates, datasheets and reports, please refer to the timeware[®] community website:

www.timeware.org

We acknowledge the intellectual property rights of third parties, trade marks and brand names used within this document.

NMD³ Ltd

www.timeware.org
+44 (0)1706 659368

Contents:

Page

6. Configuring the system for IIS
7. Installation of the timeware[®] Web Application Suite
8. Configuring the IIS manager

If the customer already utilizes the IIS for other programs or websites, then it is the customer's responsibility to set up the ESS and TWC. This is to avoid any unnecessary problems or conflicts that may occur during a timeware installation.

Configuring the system for IIS

Installing .NET framework

For the installation of the ESS & TWC to process, you will need to install Microsoft .NETFramework 4.6.2. The link for this can be found at <http://www.microsoft.com/en-gb/download/details.aspx?id=42643> If the operating system on the server in question is fairly new, the .NET framework should be in as standard.

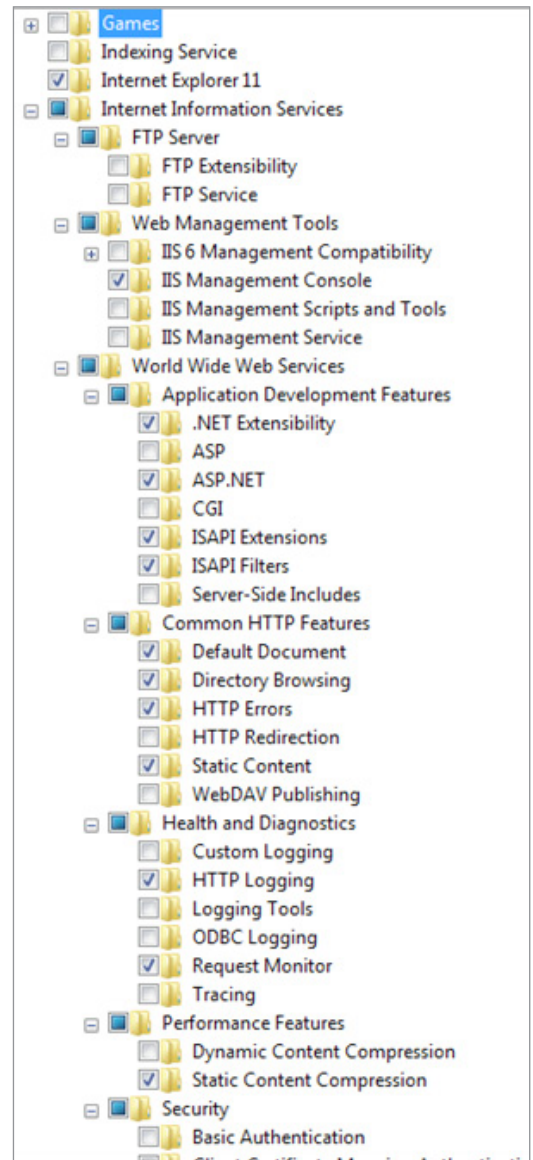
After this is complete, a reboot of the server is required for the changes to take effect. This must be done before the timeware engineer visits site.

Installing IIS Manager (6 or above)

To install the IIS manager, go to your 'Control Panel' in Windows, then 'Programs' and turn on windows features.

Following the navigation image on the right and select ASP.NET in the Application Development Features option. This should then auto select all the other options. If not, you'll have to manually select them.

As a test, once the selections above are made Windows will turn the features on and you should be able to locate the IIS manager.

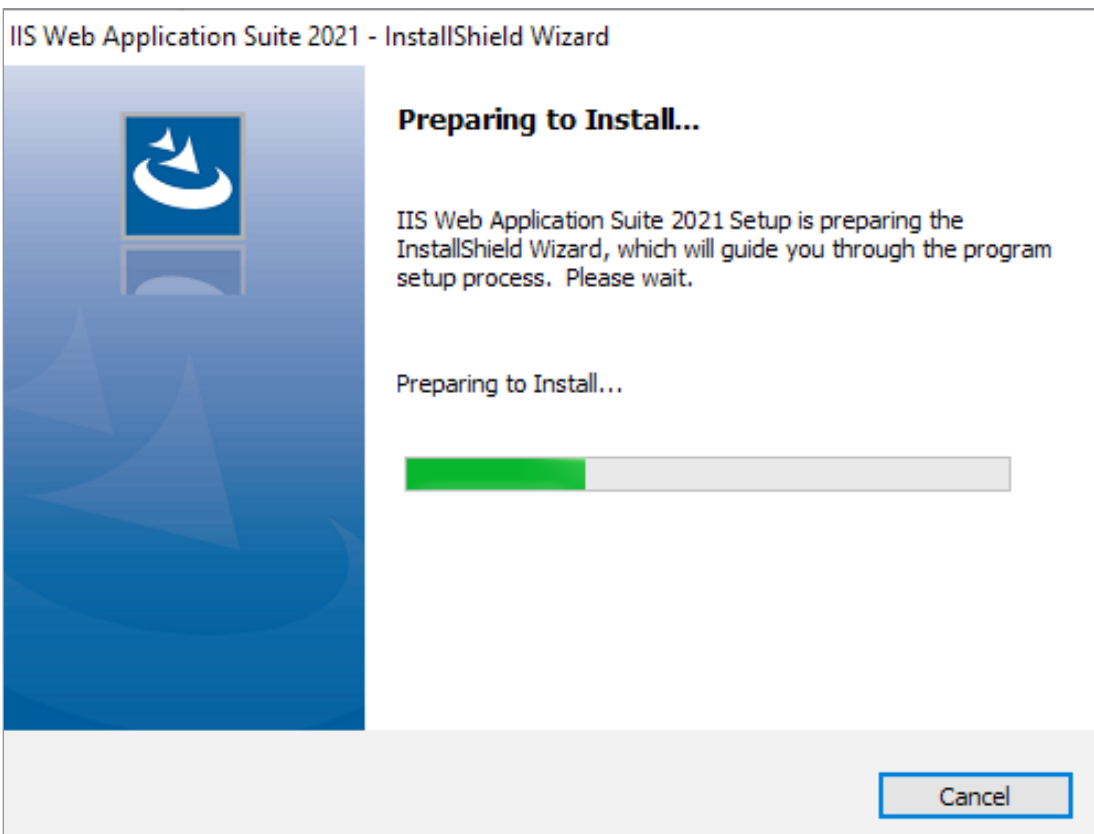
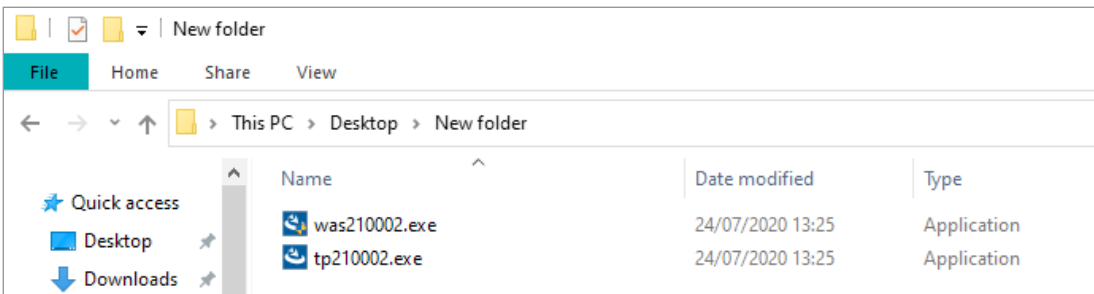


Installation of the timeware 'Web Application Suite'

The next stage in this process is the installation of the timeware 'Web Application Suite'. The 'WAS' installation file can be found on the timeware.org website in the download section under the timeware Professional 2018 download. The file is a zip folder that will contain the actual timeware software, and the Web Application Suite.

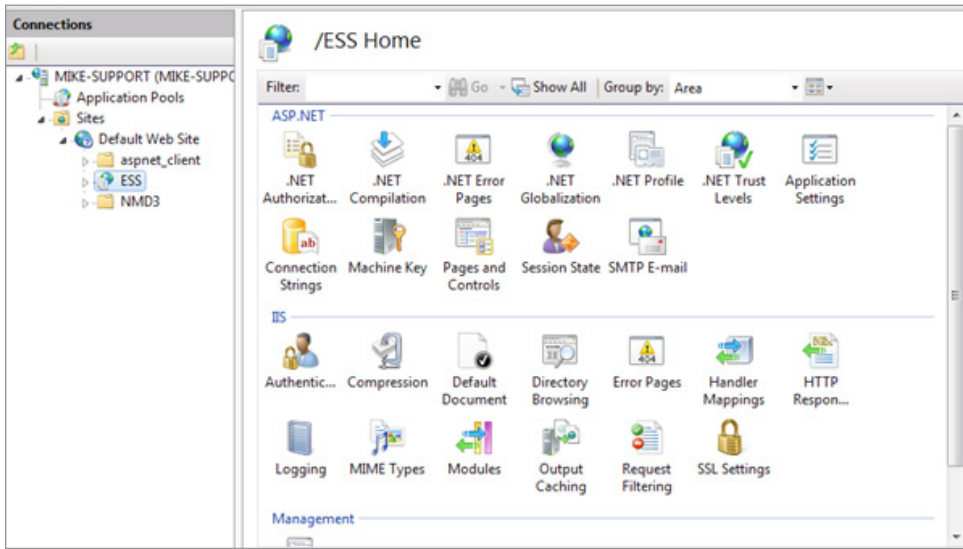
Extract the WAS, then run the WAS.exe as administrator. Once ran, this will take you through an installation process that is simple to follow. Once happy, click finish.

If the steps in this document previous to this section have not been followed, then the Web Application Suite will not allow itself to be installed.



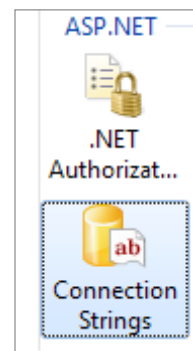
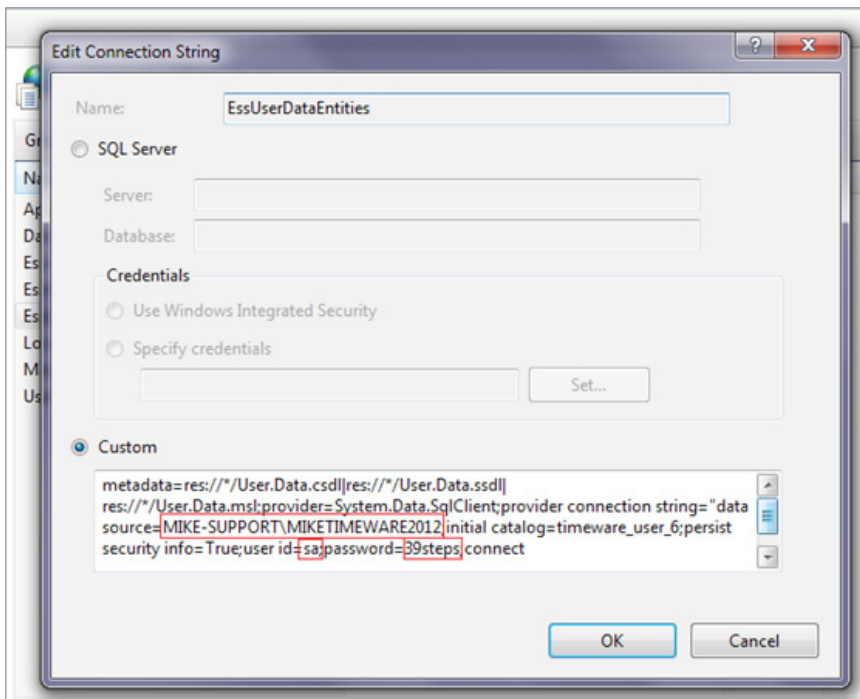
Configuring the ISS manager

Once the WAS installation has been complete, you should be able to see a file path called 'C:\inetpub'. Open up the IIS manager and once in here you should see an 'ESS' and 'TWC' tab as a sub folder by going through the Sites, then Default Web Site, then ESS or TWC. For this example we will use the ESS. You will see that the 'ASP.NET' option as shown in the screenshot below.



Now the connection strings need to be amended to allow for your SQL details.

Double click on 'Connection Strings'. From here you will need to amend four lines. These lines are called 'ESSUserDataEntities', 'ESSMainDataEntities', 'MainConnectionString' and 'UserConnectionString'. Right click and then press Edit. You will notice some text in the custom option. Here we will need to place the SQL details in which are highlighted in red on the screenshot below. The 'Data source' needs to be the instance name, the 'user id' needs to be the SQL user and the 'Password' needs to be the SQL password. The 'MainConnectionString' and 'UserConnectionString' will look slightly different to the screenshot, but the data source, user id and password will all be the same.



Now as a final step, right click the 'ESS' and press manage application and then Browse. This will open up the web page for the ESS which should hopefully present you with a logon screen. If you can see this screen, the ESS will now be functional.

